



DENVER PUBLIC SCHOOLS  
**FOUNDATION**  
INVEST IN OUR FUTURE

# INVEST

Annual Report 17/18

# CONNECT

# INSPIRE

Our city is **strengthened**  
by **every student** who  
graduates ready to lead  
a successful life





# OUR MISSION

In partnership with Denver Public Schools, we raise and manage funds, make strategic program investments, and serve as community leaders so that all students have the opportunity to succeed.



## We **INVEST** in accelerating progress.

We make strategic investments in proven and promising programs that spur growth for our students and schools. Since our inception, we've granted nearly \$124 million to benefit DPS schools and initiatives.



## We **CONNECT** the community to our classrooms.

We forge partnerships that bring talent, resources and volunteers to benefit students and schools across Denver.



## We **INSPIRE** confidence in the promise of public education.

We celebrate our students' triumphs, and demonstrate what's possible when our students, teachers and schools have access to greater opportunities.

See how we've worked to invest, connect and inspire this year—thanks to the support of our family of loyal donors.



# WE INVEST IN ACCELERATING PROGRESS



## FACE Center Expansion at Montbello Children's Network Schools:

The newest FACE Center, operated by Denver Public Schools, began to serve members of the Montbello community this fall with wrap-around services that promote economic self-sufficiency and student academic achievement. The DPS Foundation is proud to support this expansion that provides free English-language and GED classes, as well as help with tax preparation, financial coaching, legal assistance, utility assistance, veteran services, free childcare for participants and more to all community members regardless of age or whether they have a child in a DPS school.



The FACE Center in Montbello is the second center to open within the district, following the success of the first location in Southwest Denver, which has enrolled more than 1,200 participants since it opened in 2014. The innovative model helps DPS work toward many of the goals in its strategic plan, the Denver Plan 2020.

“This center is allowing us to empower our parents so they can continue to be the role models for their children as lifelong learners.”

- Sara Gips Goodall, McGlone Academy Principal



# WE INVEST IN ACCELERATING PROGRESS

**This spring, the DPS Foundation received a \$1 million grant to support trauma-informed practices, which was awarded by The Campbell Foundation, a donor-advised fund of The Denver Foundation.**



The grant announcement follows the resolution passed by the DPS Board of Education in October 2017, declaring the district to be a trauma-informed district. Nationwide, one in four students is impacted by trauma, which can mean anything from divorce to homelessness.

The grant will support a comprehensive four-part strategy that provides training and coaching for trauma-informed practices, including the development of an official trauma certification for DPS staff, and will help create education environments that recognize learning and behavior challenges as a symptom of root causes. A portion of the Campbell grant will also be dedicated to the development and implementation of a therapeutic day school. This investment truly holds the promise of helping us address barriers so *Every Child Succeeds*.

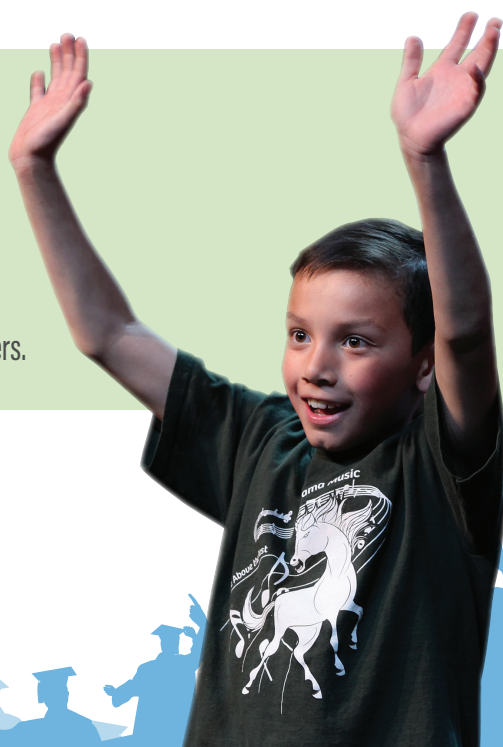
**The DPS Foundation helped to secure a \$2 million grant to support the Thrive Fellowship amongst other leadership work in Denver Public Schools from Bloomberg Philanthropies**, the charitable foundation of former New York City Mayor Michael Bloomberg. The Thrive Fellowship is an innovative new pilot where twenty DPS teachers are given resources and training they need to be able to coach other teachers, something the district considers to be a key strategy to encourage great teachers to stay in the classroom and share their knowledge and skills with other teachers.

## THE RESULTS



**DATA SHOWS TEACHERS LIKE THE APPROACH AND THEIR STUDENTS THRIVE FROM IT.**

District officials have found that the students of teachers who were supported by coaches for two or more years made more academic progress on state literacy and math tests than their peers.





“I see where I’m going, and I believe I can actually make a difference in kids’ lives.”

- Cindy, Junior EdConnect student at CEC Early College

## We are developing educator talent and increasing the diversity of the teachers in our classrooms through career pathway programs such as EdConnect.



The first of its kind in the nation, EdConnect, in part made possible by generous support from Janus Henderson, provides DPS high school students with a combination of coursework and real-world

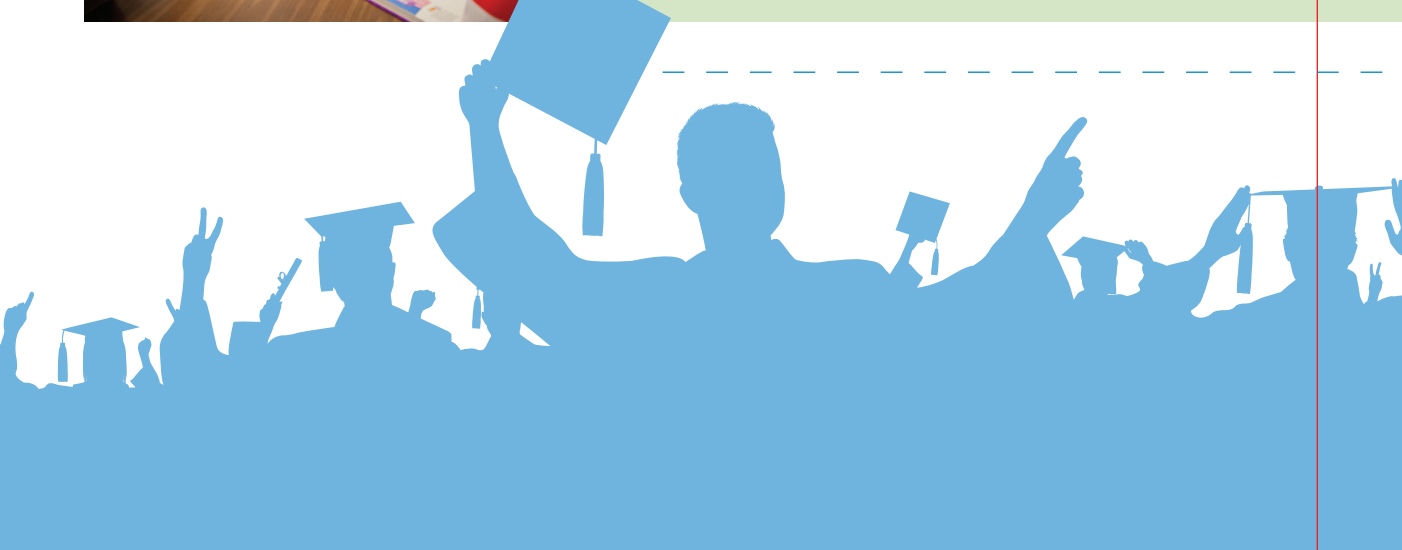
learning to become teachers. This helps the district to train and hire talent from within DPS to build diversity in classrooms by drawing upon our current DPS students to become the teachers of tomorrow. Cindy, a junior at CEC Early College, is part of the first cohort of students in EdConnect. For students like Cindy, the EdConnect teacher program is a pathway to lifelong success. Supporting our students today, helps them create a successful tomorrow.



## THE RESULTS

Data shows that students in career pathway programs are

**30%** MORE LIKELY TO GRADUATE THAN THEIR PEERS



**8 YEARS  
IN A  
ROW**

DPS students posted stronger academic growth than the rest of the state per the Colorado Measures of Academic Progress (CMAS).



**3-POINT  
LITERACY GAP  
IN 2018**

**2-POINT  
MATH GAP  
IN 2018**



Academic gaps between DPS students and their Colorado classmates have nearly closed. In 2005, the gap was 25 points in literacy and 22 points in math.



**7-POINT  
INCREASE  
IN 3 YEARS**

Students of color gained seven points in English language arts proficiency over the past three years and DPS English language learners now significantly outperform their peers statewide.

“In 2005, DPS was last among the state’s largest 12 districts in academic growth in English language arts and math. Through the focus of the Denver Plan and the incredibly hard work of our teachers, students and families, DPS has gone from last to first in academic growth.” - Tom Boasberg, DPS Superintendent, 2009-2018

# WE CONNECT

## THE COMMUNITY TO OUR CLASSROOMS

**With community support, our students and schools can thrive.**



Mortenson Construction held its 11<sup>th</sup> annual golf tournament where the DPS Foundation was selected to be the beneficiary. The tournament raised more than \$54,000. We are grateful for Mortenson's continued partnership and support of Denver's schools.



### **Corporate engagement provides unique opportunities for students:**

The Western Union Foundation committed a multi-year grant totaling \$250,000 to the DPS Foundation in support of innovative programs in DPS, with a strategic focus on narrowing Colorado's skills gap. In addition to focusing on career readiness, Western Union Foundation honored DPS teachers on-court at the Denver Nuggets' Hispanic Heritage Night for their commitment to the success of their students. Additionally, Western Union Foundation gave several groups of DPS students a once-in-a-lifetime opportunity to do basketball drills and receive pointers on-court at The Pepsi Center.



“We are grateful for Western Union Foundation’s generosity. It is so special for our students to have an experience like attending a professional sporting event and getting to play on the court!”

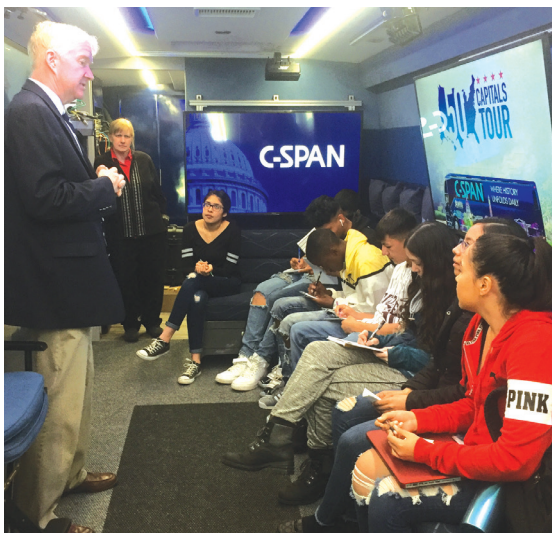
- Elaine Gironini, DPS teacher

# WE CONNECT

## THE COMMUNITY TO OUR CLASSROOMS

**Unique opportunities make students aware of careers they never thought possible.**

Students from Bruce Randolph School's eleventh-grade journalism class got to participate in the C-SPAN Bus as part of its 50 Capitals Tour in partnership with Comcast. The bus tour helps to politically engage teachers, students and elected officials while promoting local initiatives in the community.



“I wasn’t even aware that something like this existed! I learned that C-SPAN is really beneficial to students and teachers. They don’t force ideas on you and instead let you make up your own mind—which is awesome.”

–11th grade journalism student



As part of CareerX, a program that encourages career exploration, **Noble Energy invited DPS CareerConnect students to one of their Colorado training facilities.** There, students learned what it’s like to operate in a real-life environment. Students learned about the process of extracting oil and gas from the ground, how to handle the machines, and the various every day products that we use thanks to oil and gas extraction. Connecting businesses to our students by showing them different experiences in the workforce can open students’ eyes to new careers and give them a taste of what future opportunities are possible.

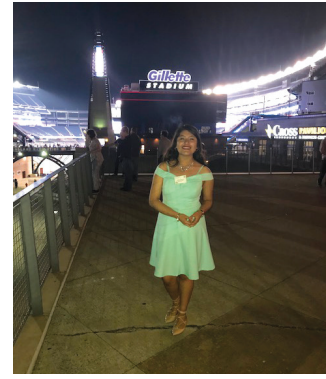




## Students soar to new heights thanks to United Airlines partnership.



Generous support from United Airlines this past year provided the opportunity for nearly 30 DPS students and staff to step out of the classroom, enhance their perspectives and learn in new ways. United Airlines provided students, many of whom have never traveled on an airplane before, experiences that are shaping their futures. **See examples of opportunities made possible below.**



Students from Bruce Randolph School's Spanish Language Arts class (*pictured above*) traveled to Foxboro, MA to attend the National Spanish Spelling Bee competition. Students worked the entire year on improving their bilingual skills. The students, who earned their spots by winning the local spelling bee, not only were able to experience a new city, they also placed in the spelling bee as finalists!



**One DPS Educator, Samuels Elementary teacher, Jamie Patton Rochford, traveled to Accra, Ghana** with the non-profit organization Limited Research Teacher Training (LRTT), where she provided training to local teachers, focusing on effective teaching strategies for the foundation years of primary school. Ghanaian students have improved educational experiences as their teachers learned about rigor, pacing, differentiation, collaboration and more. The collaboration Jamie received by working with LRTT also benefited her by providing cultural insight and perspectives so she could learn how to effectively teach a very diverse group of students. Moving forward, this experience helped increase equity within her school and the district overall.



“Graduating from high school prepared to enter the adult world—in whatever way that may be—is such a monumental milestone. Graduation days show me that we are making a difference without a doubt. **Our work matters.** This includes you. This truly is what’s possible when our students, teachers and schools have access to greater opportunities.”

- Verónica Figoli, DPS Foundation President & CEO

**456** MORE GRADUATES THAN 2017

This represents an increase of 1,000 graduates over three years and an increase of 2,000 graduates over 10 years.

**2X** The number of African American and Latino graduates in the past decade.

 **130%**

Since 2010, northeast Denver has had the greatest increase in the number of graduates, from 333 to 768 students.

# WE INSPIRE

## CONFIDENCE IN THE PROMISE OF PUBLIC EDUCATION



### Achieve Gala 2018

This year's Achieve Gala, "Creating Futures Together," showcased the skills and talents of more students than ever before—220 DPS students from 20 different schools. The event featured a menu designed by culinary students from DPS' Vista Academy; a behind-the-scenes look at the making of the Gala through the eyes of student producers from the Career Education Center Early College; music from student singers and musicians from North High School, STRIVE Prep-Excel, Abraham Lincoln High School, and Hamilton Middle School; student artists who drew one-of-a-kind pieces during the reception; vases for the table centerpieces created by six different DPS classrooms; an original spoken-word piece written by a Denver School of the Arts student; a student emcee from Denver Center for International Studies; and student keynote speaker Danna Al-Rashidi-Schmiedel, a high school student from DPS' PREP Academy, who shared how her education has helped her achieve what others thought was not possible, demonstrating what our students can achieve when they have access to great opportunities.

**The evening raised \$1.13 million to continue our momentum for them and for students for years to come.**

"Growing up, I was often told I would be another statistic. That not only would I not attend a four year university—but that I wouldn't even graduate high school. I am proud to beat these odds and will be attending my dream college this fall."

– Danna Al-Rashidi-Schmiedel, Gala Keynote Speaker who now attends Colorado State University



# WE INSPIRE

## CONFIDENCE IN THE PROMISE OF PUBLIC EDUCATION

**This October, in partnership with the Denver Metro Chamber of Commerce, the DPS Foundation hosted an engaging roundtable event, Thriving Schools Thriving Businesses.** There, several panelists spoke to business and community leaders and shared their thoughts on the role businesses should have in providing educational opportunities for students in the city they live in, as well as the need for other businesses to get involved to support our future workforce—in turn strengthening the city of Denver as a whole.

We're always glad to educate our partners on current progress being made for our students and the challenges that remain. This May we facilitated a discussion with DPS Superintendent Tom Boasberg at the offices of TIAA, one of our longtime partners. There, employees heard about the vision for DPS, exciting innovation happening in the district, and how business leaders can connect and make a difference in the community. **Ensuring our community leaders and businesses are engaged, helps provide stronger and better supports for students for years to come.**



“An engaged community creates a powerful school system.”

- Leanna Clark,  
DPS Foundation  
Board Chair



# Denver Public Schools: An example of focused impact

## Montbello Children's Network Schools



**FACE Center** offers free wrap-around services to community members 16 or older in order to obtain critical life skills and increase their economic self-sufficiency and the academic achievements of their students. FACE Center offers a variety of multi-generation services at one location, making it convenient for families to benefit from multiple services offered in their school community.



## Barnum Elementary



The **Equity Fund** grant opportunity aimed to encourage school leaders to propose impact projects aligned to DPS's commitment to building a culture that embraces the unique identity and potential of every child. These projects seed work in a school that will continue to help close the gaps within the school beyond the timeline of the project. These projects work to drive change to: (1) close the opportunity gaps, (2) remove any obstacles that stand in the way of success for any child, and (3) make schools inviting, inclusive, and caring and equitable places for all of our educators and children.



**Lights on After School (LOAS)** is a partnership between the DPS Foundation, Mile High United Way, and the City and County of Denver that provides funding to ensure the sustainability of quality, school-based afterschool programs that keep our student's engaged in enriching learning experiences during the critical 3 p.m. to 6 p.m. hours.

## Ellis Elementary



**Project Esperanza** is funded through generous support from the W.K. Kellogg

Foundation. This investment aims to scale a successful Denver Public Schools pilot that builds teacher and principal capacity in a K-5 dual language instructional model at select schools that will serve as the district's demonstration sites and that will narrow the achievement gap between English learners and native English speakers.



### Key



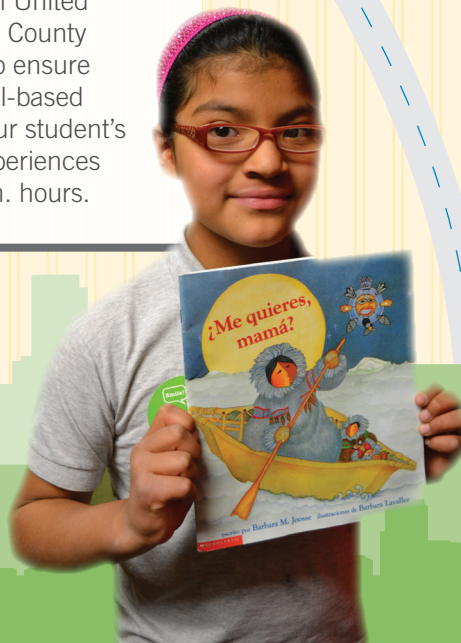
Whole child, whole family



School flexibility



Teacher and school leader growth & support



# FINANCIALS

## Statement of Activities and Change in Net Assets

Fiscal Year Ended June 30, 2018

### Revenue, gains and other support:

Contributions:	
Family and grant-making foundations & organizations	\$4,679,000
Corporate & corporate foundations	2,666,000
Individuals	412,000
Local government & agencies	109,000
In-kind	60,000
Special events, net	978,000
Investment income	169,000

**Total revenue, gains and other support** **\$9,073,000**

### Expenses:

Program services & grants	\$6,824,000
Management & general	580,000
Fundraising	568,000

**Total expenses** **\$7,972,000**

Change in net assets	\$1,101,000
Net assets, beginning of year	7,745,000

**Net assets, end of year** **\$8,846,000**

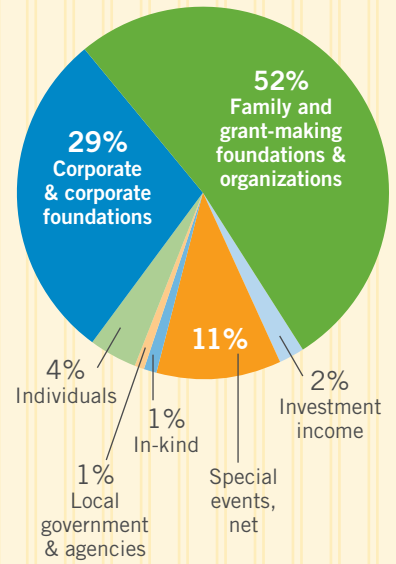
Denver Public Schools Foundation received an unmodified opinion by independent auditors EKS&H LLP for the year ended June 30, 2018. The complete Financial Statements and Independent Auditors' Report is available upon request.

### Grants funded:

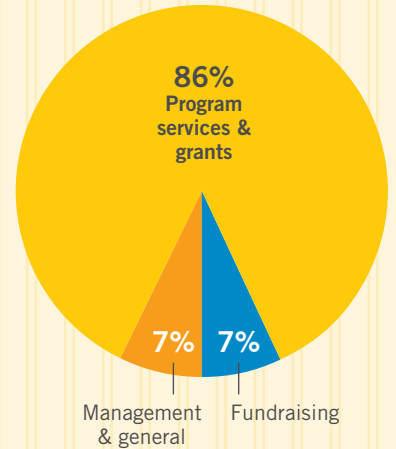
Teacher and school leader growth & support	\$2,013,000
School flexibility	1,442,000
Whole child, whole family	2,182,000
Workforce development	954,000
Unique opportunities	70,000

**Total grants funded** **\$6,661,000**

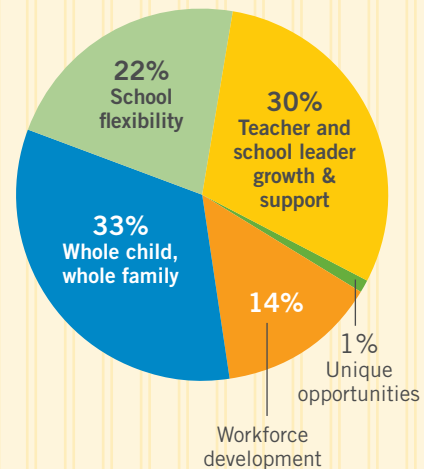
### Total Revenues



### Total Expenses



### Total Grants Funded



# BOARD OF DIRECTORS

## OFFICERS

**Leanna Clark, Chair**

Vice Chancellor of University Communications,  
University of Colorado Denver

**Priya Burkett, Chair-Elect**

Director of Business Development,  
West Region, American Express

**Jeanne Saunders, Treasurer**

Owner, Saunders Financial

**Kirk Mielenz, Secretary**

CEO, RevGen Partners

**Craig Umbaugh, Immediate Past Chair**

Partner, Hogan Lovells US LLP

## BOARD MEMBERS

**Kathryn Albright**

President, KRA Treasury Solutions

**Christine Benero**

President & CEO, Mile High United Way

**Tom Boasberg, Non-voting\***

Superintendent, Denver Public Schools

**Cedric Buchanon**

Community Leader

**Linda Campbell**

Restorative Justice Practitioner, Shoemaker  
Elementary and the Barton Institute for  
Philanthropy and Social Enterprise

**Jeff Dolan**

Vice President of External Affairs, Comcast Cable

**Adam Donner**

Founder and VP of Operations, Photogra, Inc.

**Jennifer Evans**

Shareholder, Polsinelli

**Mike Ferruffino**

President & CEO,  
Hispanic Chamber of Commerce of Metro Denver

**Emanuel (Manny) Hilario**

President & CEO, The ONE Group

**Christinne Johnson**

President of Human Resources, FirstBank  
Holding Company

**Patsy Landaveri**

Senior Community Affairs Advisor, Noble Energy

**Jacqueline Molnar**

Chief Compliance Officer, Western Union

**Ruth Rohs**

Vice President of Corporate Communications,  
IMA Financial Group

**Jon Roitman**

Senior Vice President,  
Airport Operations, United

**Anne Bye Rowe, Non-voting**

President, Denver Public Schools  
Board of Education

**Alyssa Whitehead-Bust**

Partner, Attuned Education Partners

**Dee Wisor**

*Chair of Audit Committee*  
Attorney, Butler Snow LLP

**Rebecca Grant Zarret**

Adjunct Faculty, University of Colorado  
Denver; Independent Education Consultant

\*This annual report reflects 2017-2018, when Tom served as DPS Superintendent

# THANKS TO OUR DPS FOUNDATION TEAM

**Verónica Figoli**

President & CEO

**Kaytie Buell**

Accountant

**Violeta García, PhD**

Grant Management Consultant

**Shelly Kolvitz**

Events & Development Associate

**Kelly Martin**

Vice President of Strategy  
& Development

**Kimberly Martinez, CPA**

Vice President of Finance & Operations

**Ashley Muramoto**

Communications Manager

**Rebecca Reutlinger**

Development Director

**Kimberly Reynders**

Database Specialist

**Traci Tuche**

Executive & Board Relations Manager

**Katie Wienecke**

School Partners Program Manager

DPS Foundation Board of Directors and team lists are current as of October 15, 2018.



1860 Lincoln Street, 9<sup>th</sup> Floor  
Denver, CO 80203-7301  
(720) 423-3553  
[dpsfoundation.org](http://dpsfoundation.org)

GET

INVOLVED

TODAY

SAVE  
THE  
DATE

### ACHIEVE GALA 2019 | April 10, 2019

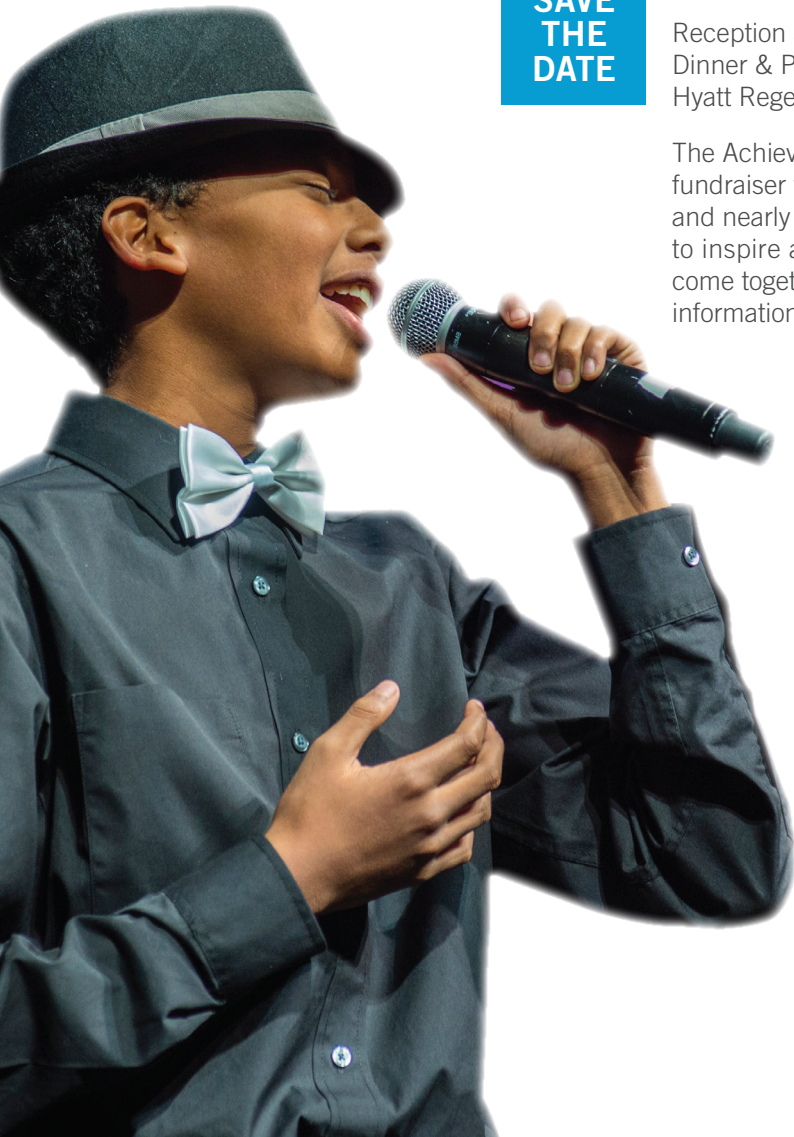
Reception at 5:30 p.m.  
Dinner & Program at 7:00 p.m.  
Hyatt Regency Denver at Colorado Convention Center

The Achieve Gala is the DPS Foundation's annual fundraiser to support the more than 92,000 students and nearly 200 schools in DPS. The event is sure to inspire and remind us what's possible when we come together to support our students. For more information, visit [dpsfoundation.org/achieve](http://dpsfoundation.org/achieve).

### Volunteer Opportunities

The Denver Public Schools Foundation relies upon committed individual volunteers to help us advance our work, and help DPS accelerate its progress. There are many ways for you to make a positive impact on Denver's students and schools. Whether it's reading to a student each week, or working with your company to have a service day for a school, you can make an impact in the lives of DPS students. To learn more call (720) 423-3553 or email us at [info@dpsfoundation.org](mailto:info@dpsfoundation.org).

**View the donor roll here:**  
[dpsfoundation.org/annual-report](http://dpsfoundation.org/annual-report)





# THANK YOU TO OUR GENEROUS DONORS

## \$250,000+

Bloomberg Philanthropies  
Campbell Foundation Fund, a donor-  
advised fund of The Denver Foundation  
The Colorado Health Foundation  
Colorado Rockies Charity Fund,  
a McCormick Foundation Fund  
JPMorgan Chase Foundation  
Project Lead The Way, Inc.  
The Wallace Foundation

## \$100,000 to \$249,999

Anonymous  
Janus Henderson Foundation  
Kaiser Permanente & Kaiser Foundation  
Health Plan of Colorado  
Kroenke Sports Charities  
Mile High United Way  
The Piton Foundation  
Rose Community Foundation  
Walton Family Foundation  
Western Union Foundation

## \$25,000 to \$99,999

Anonymous (3)  
The Anschutz Foundation  
Elaine Gantz Berman & Steve Berman  
Carson Foundation  
Comcast  
Connie Burwell White &  
William W. White Foundation  
Denver Broncos Football Club  
Denver Center for the Performing Arts  
The Denver Foundation  
The Denver Post Season To Share  
presented by DaVita  
The Denver Post Season To Share,  
a McCormick Foundation Fund  
Elizabeth S. & Mary A. Brauer Charitable  
Fund, a donor-advised fund of  
Schwab Charitable  
Sarah & Erik Hagevik  
Hyatt Regency Denver at  
Colorado Convention Center  
Mortenson Construction  
PeyBack Foundation  
RevGen Partners  
RK Foundation  
Kim & Rob Roberts  
Temple Hoyne Buell Foundation  
TIAA  
United Airlines  
U.S. Bank & U.S. Bank Foundation  
Westerra Credit Union

## \$10,000 to \$24,999

Anonymous  
Barton Family Foundation, a donor-advised  
fund of The Denver Foundation  
Marcy & Bruce Benson  
Barbara & Daniel Berv  
Tom Boasberg  
BuildStrong Education  
Priya & Matthew Burkett  
Colliers International

Community College of Denver  
DaVita, Inc.  
Delta Dental of Colorado  
Denver Metro Chamber of Commerce  
Cathey & Richard Finlon  
FirstBank  
Fred & Jean Allegretti Foundation  
Sylvia & Emanuel "Manny" Hilario  
Hogan Lovells  
IMA Foundation  
Amie Knox & James Kelly  
Kroenke Sports and Entertainment, LLC  
Susan & Bruce Madison  
MDC / Richmond American Homes  
Foundation  
Menzies Aviation  
David Mosteller  
Noble Energy  
Polsinelli  
PrimeFlight Aviation Services  
RBC Wealth Management & Capital Markets  
Kristin & Blair Richardson  
RICOH  
Sage Hospitality  
Sizzling Platter, LLC  
Suncor Energy  
Sylvia Knobloch Brown Fund, a donor-  
advised fund of The Denver Foundation  
University of Colorado Denver  
Alyssa & Michael Whitehead-Bust  
Cille & Ron Williams  
XTO Energy

## \$5,000 to \$9,999

Anonymous  
ALC  
Alpine Bank  
Anderson Mason Dale Architects  
Anne Rowe for DPS School Board  
Ashford University / University of the Rockies  
Baseball Tomorrow Fund  
BBVA Compass  
Belay Fund, a donor-advised fund of  
The Denver Foundation  
Dawn Bookhardt  
Butler Snow LLP  
Stacy Carpenter & Justin Prochnow  
CenturyLink  
Colfax Marathon Partnership, Inc.  
Colorado State Bank and Trust  
Denver Health & Hospital Foundation  
Denver Museum of Nature & Science  
Christine DeRose  
Stephanie & Adam Donner  
EKS&H  
Nancy & Sam Gary  
GH Phipps Construction Companies  
Giraffe Fund VII, a donor-advised fund  
of Fidelity Charitable  
Barbara Grogan  
Catherine Hance  
Liberty Global, Inc.  
Little Pub Company  
Lt. Governor Donna Lynne & Jim Brown  
Mark Young Construction, Inc.  
McKinstry

Newell Team with  
Pinnacle Real Estate Advisors  
OneNeck IT Solutions / Cisco Systems  
Precourt Foundation  
RBC Wealth Management,  
The DeRose Investment Group  
Sam S. Bloom Foundation  
Jeanne Portmann Saunders &  
Richard Saunders  
Karen & Joel Schimke  
SCL Health  
Seattle Fish Company  
Semple, Farrington & Everall, P.C.  
Slavens School PTA  
Stifel  
STK Denver  
Strear Family Foundation  
Tender Belly  
Darryl Traweek  
UMB  
Janice & Dee Wisor  
Xcel Energy & Xcel Energy Foundation

## \$2,500 to \$4,999

Amp the Cause  
Elaine & Max Appel  
BC Interiors  
BKD CPAs & Advisors  
Brooke & Bill Brown  
Bruton's Books  
BWAB Incorporated  
Cardan Capital Partners  
Joey Carrasquillo  
Citywide Banks  
Leanna Clark  
Davis Graham & Stubbs LLP  
Stephanie & Shannon Duffy  
Ed Bozarth #1 Park Meadow Chevrolet, Inc.  
Verónica Figoli & David M. Fleischer  
David Fullagar  
George K. Baum & Company  
HomeAdvisor  
JPMorgan Chase & Co.  
Marcee & Rick Kinning  
Leprino Foods Company  
Lockton Companies  
Metropolitan State University of Denver  
& Metropolitan State University of  
Denver Foundation  
Netflix  
Office of Family and Community  
Engagement - DPS  
Ready Foods, Inc.  
Michael Rollin  
Saunders Construction  
The Swinerton Foundation  
Technology Integration Group  
The Ted Radey Fund, a donor-advised  
fund of Vanguard Charitable  
University of Denver  
Deborah & David Younggren  
Rebecca Grant Zarret & Scott Zarret  
Lisa Zoeller & Craig Umbaugh

## \$1,000 to \$2,499

Anonymous (3)  
Aetna  
Kathryn & Eric Albright  
Kim Allegretti & James Galloway  
Sue & Harvey Allon  
American Online Giving Foundation, Inc.  
Anna Kathryn Ryan, a donor-advised fund of the Records-Johnston Family Foundation, Inc.  
Lisa & Joel Appel  
Sarah & Bryan Auchterlonie  
Laura & Dave Baker  
Mary Ann & Michael Bash  
Christy & Ferdinand Belz  
Christine Benero  
Alex Berv  
Belzley Family Foundation Fund, a donor-advised fund of The Denver Foundation  
Teresa & Scott Binder  
Polly & Izzy Breit  
Jan & Mark Bundy  
Busse Family Foundation  
CFM Company  
Aimee & Jonathan Coleman  
The Colorado Trust Staff-Directed Contributions Program  
Community First Foundation  
Moir Coogan & Matthew Carroll  
Rick Cortez  
Council of Great City Schools  
Angela & Davey Cutler  
Denver Art Museum  
Denver Great Hall, LLC  
Denver Metro Chamber Leadership Foundation  
Kim Knous Dolan & Jeff Dolan  
Alicia Economos  
El Pomar Foundation  
Elitch Gardens  
EON Office  
Ferguson Enterprises  
Mark Ferrandino & Greg Wertsch  
Molly & Bryan Ferrer  
Celeste Fierro  
Darla Figoli  
Shannon & Mark Fitzgerald  
GE Johnson Construction Company  
Kitty George  
Golden Triangle Construction, Inc.  
Brooke & Thomas Gordon  
Dawn Loge Greer & Eldridge Greer  
Karen & Bruce Guest  
Josh Hanfling  
Janet & Shultz Hartgrove  
Mary-Margaret Henke  
Susan & Tom Hilb  
Kenneth Hoagland  
Mary Holleman  
Dorothy & Ted Horrell  
Infor  
Innovest Portfolio Solutions, LLC  
Rachel & Tim James  
Karen Jenni & Mark Fitzgerald  
Christinne Johnson  
Marsha & David Johnson  
Tanya Jones  
Debra Kalscheur  
Cheryl & Art Karstaedt  
Jessica & Jonathan Kosares  
Barbara & Steven Krause  
Candace & Mark Kristensson  
Lorraine & Harley Higbie Fund, a donor-advised fund of The Denver Foundation  
Stephanie & R. Roland Lyon  
Catherine & William Marlin  
Monica Martinez & John Huggins  
Sarah McCarthy & Andrew Feinstein  
Ann McCullough  
MDP Engineering Group  
The Meyers Family Foundation

MidFirst Bank  
Brenna & Kirk Mielenz  
Lisa Farber Miller & David Miller  
MOA Architecture  
The Moe Family Charitable Fund, a donor-advised fund of Schwab Charitable  
Jacqueline Molnar  
Moody Insurance Agency  
Neyeska Mut  
New York Life, a YourCause, LLC Program Partner  
Palace Construction  
Laura & Marc Paolicelli  
Russell Parker  
PFM Asset Management, LLC  
Marilyn & Bill Plummer  
Ginna & Jason Raahauge  
Martha Records & Rich Rainaldi  
John Redmond  
Ellen & Jeff Rehmar  
Scott Remington  
Mary & Ryan Rhinehart  
Karen & Don Ringsby  
The Rivers Charitable Fund, a donor-advised fund of The Denver Foundation  
Debi & Michael Roads  
Ruth & Stephen Rohs  
Jon Roitman  
Anne Bye Rowe & Frank Rowe  
Kathryn & Tim Ryan  
Amanda & Edward Sawyer  
Ellen Scott  
Josh Scott  
Susan & Jeremy Shamos  
Maggie & David Shapiro  
Peter Simon  
Mary & George Sissel  
Jodi & Jim Smallwood  
Maria Stacy  
Stand for Children  
Sandra & Kurt Stenmark  
Ann Hoyt Stolfa & David Stolfa  
STRIVE Prep  
Surescape Insurance Services, LLC  
Ali & Jason Sweeney  
Sy-Bazz Architecture, LLC  
Pamela & Christopher Telli  
Terri & Gordon Appell Family Charitable Fund, a donor-advised fund of Fidelity Charitable  
Leo Tokar  
Trelora  
Thomas Trouillot  
University of Colorado Boulder  
University Park Elementary PTA  
Mary Rose & Grant Varveris  
Chris Watney & Rob Gary  
Weifield Group Contracting Fund  
Sharon & Dave Wienecke  
Christopher Wong  
Marianne & Les Woodward  
WSM Industries  
Xanterra Parks & Resorts

## \$500 to \$999

Anonymous (5)  
A+ Colorado  
Wanda Abel  
Raydean Acevedo  
Kristy Adams  
Josh Allen  
Stacey Aronowitz & Joel Mecklenburg  
Claudia & Edwin Asturias  
Libby Catherine & Roy Bash  
Elizabeth Bayliss & Simon Hambidge  
Jack Becker  
Nancy Bellew  
Lisa & Mark Betchey  
Deborah Blair-Minter  
Tracy & Kent Bozarth  
Joan Brennan

Amy Bringedahl  
Mary Kay & Ken Buckius  
Lois Calvert  
Lisa Cashman  
Connie Casson  
Marilyn Cleland  
Angela Cobián  
Colleen & Adam Cohen  
Colorado Rockies Baseball Club  
Colorado Threads Clothing  
Community College of Aurora  
Maranda Compton & Jordan Chase  
Connection Public Sector Solutions  
Virginia & Kevin Conwick  
Amy K. Cook  
Craig Hospital  
Sara & Jim Culhane  
Christina Curtis  
Daniels Fund  
Juliet & Jason Dawkins  
Flora Jane & James DiRienzo  
Angela & Sean Duncan  
Tara Dunn  
Audrey Epstein & Scott Merenstein  
Maureen Fleming  
Wendell Fleming & Stephen Cunningham  
Lori Fox & Tom Downey  
Janice & Kyle Fritsch  
Ledy Garcia-Eckstein & John Eckstein  
Leslie & Noel Ginsburg  
gkkworks  
Grant Beacon Middle School  
Alexandria & John Hagan  
Jennifer Hallam  
Rae & Craig Harris  
Stephanie & Edward Harvey  
Maria & Andrew Harwood  
Rebecca & Gregory Hatcher  
Annie & Josh Hatter  
Debbie Hearty & Keith Roark  
Katrina & Trey Heim  
Jennifer Holladay  
Nick Howe  
Heidi & Bruce Hoyt  
Steve Jaquith  
Barb Jones & David Suppes  
Shawna Kennedy  
Khan Family Fund at TIAA Charitable  
KIPP Colorado Schools  
Brian Konczak  
Michelle Koyama & Tracy Allgeier  
Amy Kuark  
Marty Lassen  
Laura Lee & George Gastis Fund, a donor-advised fund of Schwab Charitable  
Maurice Liddy  
Ann & Hal Logan  
Lyons Family  
Evi & Evan Makovsky  
Courtney & John Mamuscia  
Kristen Martin & Kevin Manzo  
Martin & Gloria Trotsky Family Foundation  
Kimberly Martinez  
Deborah Maruyama  
Mi Casa Resource Center for Women, Inc.  
Mary Moser & William Richey  
National Western Stock Show  
Alexandra & Josh Newell  
Kristin O'Connell  
OfficeScapes Schools  
Carol & Gus Ostermann  
Marta Osuna & Richard Trenholme  
Amy & Tony Pasquini  
Peine Family Fund, a donor-advised fund of Fidelity Charitable  
Point B, Inc.  
The Pujet Family  
Cyrus Rajabi  
Stevie Reynolds  
Sarah Ritchey & Jonathon Haradon  
Melinda Wiggins Robinson & Andrew Robinson

Rosemary Rodriguez  
Bruce Savage  
Wendy Schorseh  
Sidney B. & Caleb F. Gates Fund, a donor-  
advised fund of Schwab Charitable  
Teva Sienicki  
Noah Slauson  
Robin Smith  
Valerie Southgate  
Spritzer Family Fund of JEWISHcolorado  
Teresa Steele & Mike Thompson  
Therese & Gregory Sissel Charitable Fund,  
a donor-advised fund of Fidelity Charitable  
TIAA Serves, a YourCause, LLC  
Program Partner  
Lauren & Colin Trent  
Vanessa Trussell  
Lauren Ulrich & Scott Payant  
Hollie Velasquez-Horvath  
Leslie & Armando Vidal  
Jennifer & Timothy Walmer  
April & Chris Walters  
Allen Wat  
Wells Fargo Bank  
Becky Wiggins & Michael Tinsley  
Kristin Williams & Darin Parks  
Dennis Wolfe

### **\$250 to \$499**

Anonymous (4)  
Eric Adelman  
Alexandra Alonso & Brad Schwoegler  
Bernadette Apodaca  
Susan & Steve Bachar  
Lisa & Jeff Barratt  
Theresa & Jeff Becker  
Whitney Bell-Haggard  
Kelly & Josh Benninghoff  
Laura Kate Berger  
Henry Bird  
Kristy & Chris Blackwood  
Rae Ann Borjes-Easley & Nate Easley  
Amy Breuer  
Jill Bukowski  
Burgess Services, LLC  
Nita & Don Burkhardt  
Sarah & Edward Butler  
Mary & Ronald Butz  
Karen & Jay Calderone  
Cheryl Caldwell & Win Deal  
Stephanie Caraway & Allan Dibben  
Erica & Chuck Carpenter  
Terrance Carroll  
Tanya & Mitchell Carter  
Dori Claunch  
Leslie Colwell  
Eleanor Conger & Jesús Rodríguez  
Becky Crowe  
Jojo Cush  
Luella & Terence D'Angelo  
Vicki Perlmutter Danský & David Danský  
Andrew Davenport  
Meaghan Deguisto  
Jerome DeHerrera  
Jackie & Dan Domagala  
Wendy Dominguez  
Emily Dorn & Ryan Kockler  
James Dorough  
DSST - Public Schools  
Bridget Duzzie  
Dori & Rob Eggett  
Amber Elias  
The Emanuel & Ellen Marritt Endowment, a  
donor-advised fund of Schwab Charitable  
Britta Erickson & Richard Turner  
Rachel & Brian Eschbacher  
Jamie Esquibel  
Colleen Faddick  
Anjali & Ted Featherstone  
Marissa Ferrari  
Fran & Mike Fisher

Barbara & Frank Fleischer  
The Foundation for Sustainable Urban  
Communities  
Kristi Franko  
Samantha & Joseph Gallagher  
Jean Galloway  
Violeta Garcia & J.F. Coronado  
Kyle Garvella  
Laci & Jon Gettings  
Google  
Adrien & John Graham  
Emma Grogan  
Marissa Hammond  
Jennifer & Steven Harris  
Lynn Hawthorne  
Anna Jo Haynes  
Happy Haynes  
Carolyn Henzel  
Jill Hess  
Michael Hickman  
Arlene & Barry Hirschfeld  
Gene Hodge  
Ken Hoff  
Matthew Holmes  
Stephanie Hoy  
Patricia & Martin Hurrieta  
Tim Ikenouye  
Nancy & Larry Irvin  
Kathleen Jackson  
Ellen Kelty  
Jennifer Koch  
Donna Kornfield  
Dave Landy  
Molly & Chris Lane  
Timothy Leddy  
Sophia & Elliott Lepert  
Kathryn Lester  
Johanna & Nathan Levene  
M. Carol Lofft  
Sam Lombardo  
Cathy & Geoff Lucas  
Victor Luke  
Lizabeth Lynner & James Palenchar  
Nadia Madan Morrow  
Alex Magana  
Jason Maples  
Jana Mathieson  
George D. McNear  
ME Engineers, Inc.  
Alex & Josh Mers  
Andrea & Tad Miller  
Anne Modler  
Caitlin Mohl  
Sarah Almy Moore & Gus Moore  
Cindy & Steve Nederveld  
Dan O'Connell  
Maureen O'Connor-McGinn  
Jessica Ostoych  
Annie & Robert Patterson  
Diana & Dave Peters  
Peter Peterson  
Meghan & Gregory Pfanstiel  
Patrice Pierce  
Arunkumar Pillai  
Katherine Plog Martinez  
Nicole & David Portee  
Sean Precious  
Pricewaterhouse Coopers, LLC, a  
YourCause, LLC Program Partner  
Brandy Radey  
Taryn & Greg Rawson  
Kent Reinart  
Lee Renfrow  
Daniel L. Ritchie  
Robinson Family Giving Fund, a donor-  
advised fund of Fidelity Charitable  
Trey Rogers  
Chris Ross  
Lisa & Jack Rouff  
Rick Scholz  
Mark Schultz

Gail Schuster  
Shannon & Andrew Schutz  
Jane & Rob Scofield  
Stefanie & Alex Seldin  
Barbara Sharp  
Amy Shaughnessy  
Julia Shepherd  
Suzanne Morris Sherer & Michael Sherer  
Shelby Sheridan  
Todd Sprague  
Springboard Communications, LLC  
Scott Springer  
Kristen Stevenson  
Isak Stolen  
Samantha & David Stoler  
Kellie & Jeffrey Stonger  
Janet & Seaton Thedinger  
Bart Thompson  
Sue & Mark Thompson  
Christine & Christian Thurstone  
Tracy Dunning & Eric Sondermann Family  
Fund, a donor-advised fund of Rose  
Community Foundation  
Lesli & Michael Unger  
University of Colorado Anschutz  
Medical Campus  
Katie Van Hove  
Jessica Vanderpool  
Verizon Foundation  
Renee Verspoor  
Judith & Paul Vorndran  
Wilderness Construction Co.  
Brad Windbigler  
Patricia & B.J. Wintergalen  
Heather & Brandon Wyszynski  
Brandon Zeigler

### **Up To \$249**

Anonymous (41)  
Paul Aaker  
Ashlee Adams  
Leticia & Jose Manuel Alba  
John Albright  
Anna M. Alejo & Shepard Nevel  
Elizabeth Allen-Parrish  
Bryan Alvey  
Gina Amato-Berg  
AmazonSmile Foundation  
Libby Anschutz & Jeff Allen  
Wendy & Ed Aro  
David Ashmore  
Denise Aveline  
Vivian Avila  
Anna Banuelos  
Yesenia Banuelos  
Barbara O'Brien For Denver Kids  
Eileen & Johnny Barela  
Joanna Barker  
Jill & Adam Barkin  
Maeline & Robert Barnstable  
Susan & Mark Barter  
Dawn Bauer  
Jane & Barry Beal  
Elmer Becker  
Isabel Belliard  
Daniel Berens  
Michelle Berge  
Kelia Bergin  
Alison & Marc Bessho  
Barbara Bieber  
Jessica Bing Gurfinkel  
Scott Black  
Kristen Blessman  
Federico Boccadoro  
Nikita Michael Bogdanov  
Lee Bollacker  
Tabatha Bollerud  
Nathan Bond  
Elise Bostic  
Daniel Bowles  
Jeffry Braa

Harriet & Eric Braden  
Richard Bradsby  
Fernando Branch  
Lorna Brass & Michael Bleichfield  
Ellen Brettell  
Lauren Brown  
Linda & Wes Brown  
Tracey & William Brummett  
Barry Buck  
Timothy Buczak  
Stephen Buker  
Lattice Burrell  
Brittany Burton  
Izaiah Buseth  
Sally Bustamante  
Daniel Butschchek  
Linda Campbell  
Nanci Campbell  
Amy & Brandon Canfield  
Roslyn Cantrell  
Danielle Cardona  
Rose Mary Carl  
Erik Carlson  
Salvador Carrera  
Dawn Carrico  
Stacy & Peyton Carter  
Donna Cash  
Judith Cassel-Mamet & Samuel D. Mamet  
Ignacio Castejon  
Caterpillar, Inc.  
Tammy Chamberlain  
The Charitable Giving Card Program of  
The Community Foundation of  
Middle Tennessee  
Judy Chavez  
Teri Chavez & Scott Murphy  
Thomas Chelsea  
Colleen Chock  
Paige & Matt Chorske  
Kay Christensen  
Stephen Clawson  
Janis & Thomas Closs  
Ann Cobb  
Catherine Cole  
Catherine Collentine  
Sara Collyar  
April Connolly  
Susana Cordova & Eric Duran  
Jeffrey Costantino  
Kristin Cowgill  
Jennifer Crowe  
Erica Crownhart  
Chenoa Crowshoe-Patterson  
Pam Cruz  
Sally Cumine  
Auvrey Cunningham  
Martha Davidson  
Valerie Davis  
Nikolas Dawkins  
Landry de Souza  
Kate Deal  
Ronald Deal  
Trena Deane  
Claudia Deasy  
Michael DeGuire  
Julie DeHerrera  
Patrick DeBuono  
Christine DeLeon  
Lisa Denk  
Shelby & Kurt Dennis  
Lee DeRose  
Katherine Diaz  
Kelly Dixon  
Maritza Dominguez Braswell  
Janet Donahue  
Mary & James Donovan  
Brandon Dooling  
John Doucette  
Elizabeth Douma  
Donna Duhadway  
Lauren Dunn

Stacy Dvergsdal  
Kyle Dyer  
Susan & David Edwards  
Lindy Eichenbaum Lent  
Karen Einisma  
Lauren Eklund  
Jacqueline Elder  
Michael Elmer  
Dorothy Emery  
Tonantzin Espinoza  
Barb Evans  
Mary Evans  
Shila Fabiano  
Deborah Fallin  
Shirley Farnsworth  
Angela & Daniel Feiner  
Robyn Fergus  
Gina Fielder  
Kirsten Carla Fink  
Susan & Paul Fishman  
Matthew Fitzgerald  
Michael Fitzgerald  
Patricia Fitzgerald  
Kathleen Fleming  
Alexandra Foster  
Vonda & Donald Foster  
Heather Nicole Fox  
Frame de Art II  
Sarah Freeman  
Ann Gallogly  
Angie & John Galloway  
Joyce Gammill  
Margaret & Rick Garbe  
Mary & Michael Genova  
Marla & Richard Gentry  
Chris George & Way Shen  
Gabrielle Gerlits  
Leslie Gershon  
Khalil Ghafur  
Margaret & Russel Givens  
Tari Gold  
Sarah & Judd Golberg  
Amy Golden  
Cristina Gonzales  
Judith & Daniel Gordon  
Brooke Goudy & Gordon Stenger  
Bettina Grandey  
Great-West Life & Annuity Insurance Company  
Margaret & Larry Green  
Antonio Greene  
Frank Gryglewicz  
Grant Guyer  
Al Habercorn  
Regina & Robert Hackley  
Sheena & Edward Hackstaff  
Pamela & Norman Haglund  
Margie Hahn  
Corina Hall  
William Hall  
Jessica Halliday  
Sara Hamilton  
Dawn & Preston Hampton  
Jen Hanson  
Carol & David Harguth  
Chyrise Harris  
Martha & James Hartmann  
Michael Hecker  
Janet Hehn  
Norma & Randal Heinz  
Roberta Heisterkamp  
Margit & John Henderson  
Kyle Henderson  
Nina Hendricks & Peter "P.J." Paland  
Kiera Hensel  
Beth Hessel  
Kathleen Hill  
McArthur Hill  
Sarah Hite  
Michelle Hix  
Jordyn Hollander  
Brandi Holten

Michele & Bruce Houtchens  
Minnie Huang & Michael Maris  
Burrirt Hubbard  
Lara Hussain  
Kaylee Inhulsen  
Heather Intres  
Jenny Jackson  
Sherri & James Jacoby  
Casey James  
Alexa Johnston  
Meridith & David Jones  
Kathy & Arthur Judd  
Wendy & Steve Kaeuper  
Phyllis Kajiwara  
Elena Kalahar  
Leta Kaffas  
Courtney Kallas  
Linda Kammerer  
Rebecca & Scott Kanov  
Joey Kaufman  
Rett Kearbey  
Theresa & Bob Keatinge  
Charmaine & Darryl Keeton  
Robert Kelly  
Alice & Terry Kelly  
Amy Keltner  
Elizabeth Kenny & Michael Smith  
Julie Keppler  
Gwendolyn Kerby  
Rebecca & Russell Kerr  
Meghan Kerrigan  
Michele & Troy Kilen  
Caleb Kim  
Shane Kinkennon  
Pamela Kirk  
Jody Kleinman  
F. Walker Knight  
Shane Knight  
Bethany Knighten  
Connor Knutson  
Gloria Kochan  
Donna & Scott Koehler  
Lucretia & Richard Koeppe  
Lorraine & Peter Kornafel  
Courtney Kriegshauser  
Nikki Kubly  
Henry Kusumi  
Fredric Kutner  
Ayo Labode  
Dottie & Dick Lamm  
Lora Langlee  
Ashley Rose Langlois  
Carol Lassen  
Marian Lauterbach  
Julie Ledbetter  
Cherie LeDoux  
Darlene LeDoux  
Catherine & Jay Lees  
Laura Lefkowitz  
Gavin LeGrande  
Peggy Lehmann  
Joan & Harold Leinbach  
Betsy Leonard  
David Levin  
Rena & Sidney Levin  
Ramona Lewis  
Cindy Lilley  
Gretchen & Charles Lobitz  
Jessica Long  
Lucy Loomis  
Janet Lopez Vilsack  
Benita Lopez-Provencio  
Randy Loveland  
John Low  
Judith Lyke  
Will Lyons  
Arlene & Raymond MacDonald  
Tracey MacDonald  
Andrew Maclennan  
Emily Madison  
Erin Magley

Kelsey Mahler  
 Julie A. Malek  
 Karla Maraccini  
 Maria Marbach  
 Lyn Markman Hanson  
 Philippa Marrack & John Kaplan  
 Charles Marshall  
 Cathy Martin  
 Sherry Martin  
 Greta Martinez  
 Meghan Martiniere  
 Tyler Maybee  
 Margaret & Derek McCandless  
 Joan McCracken  
 Brenna McEvvitt  
 Mary McGee & Pete Collegio  
 Benjamin McKee  
 Dan McMahan  
 Lindsay McNicholas & Matthew Gray  
 Liliana Melendez Villarreal  
 Allison Melun  
 Irene & Scott Mendelsberg  
 Phyllis Mensing  
 Nancy Mentzer  
 Julie Meyers & David Keller  
 Patrick E. Meyers  
 Microsoft  
 Donna Middlebrooks & Tom Gougeon  
 Linda Miller  
 Michelle Miller  
 Greg Mills  
 Mrs. Roy Mills  
 Stuart Miner  
 Erica Mitchell  
 Joanna Moldow  
 Sherri & William Morgan  
 Kerry Morimoto  
 Lorraine & Mario Mrva  
 Bart Muller  
 Christy Murphy & Norm Mueller  
 Ashley & Alex Muramoto  
 Bernadette Navarette  
 Jennifer Neelson  
 Lacey & M. K. Nelson  
 Jason Newcomer  
 Roxanne Nice  
 Brad Nolan  
 James Nora, Jr.  
 Jennifer Norris  
 Patricia Norris  
 Novartis  
 Rebecca O'Brien  
 Lora Ogarek  
 Stephanie Ohnmacht  
 Deborah Olson  
 Lorraine Olson  
 Oracle Corporation  
 Paula & Tom Ortlieb  
 Su Pal  
 Freida & Michael Palmieri  
 S. Katherine Parker  
 Todd Parsons  
 Jeanette & Jeriod Patterson  
 Patricia Paul  
 Janet Paulson  
 Diane Payne  
 Robert Payo  
 Seth Pearson  
 Gordon Pelton  
 Megan Percy  
 Ilse Peters & Richard Sharpnack  
 Faye & Denis Peterson  
 Reilly Pharo  
 Lillian & James Phelps  
 Michelle Phelps  
 Loretta Pineda  
 Roma Pitt  
 Kim Poast  
 Anne & Adam Poe  
 Frank Polniak  
 Christina Polycarpou  
 Kathleen Porter  
 Lea Porter  
 Jami Powell  
 Lindsay Powell  
 Mindy Powers  
 Rich Powers  
 Marlyne & Mel Preusser  
 Jeremy Quintana  
 Kate Raabe  
 Lorii Rabinowitz  
 Linda Redstone  
 Pam & Lee Reichert  
 Rhoda & Ronald Resnick  
 Rebecca & Philip Reutlinger  
 Kimberly & Jean-Noël Reynders  
 Lynn Rhodes Fritz  
 Coy Rice  
 Jill Richards  
 Sally & Gordon Rippey  
 Tristin & B.C. Roberts  
 Robin & Jay McCarthy Fund, a donor-  
 advised fund of Schwab Charitable  
 Dawn Roedel  
 Diane Rogers & Jimmy King  
 Elinor Roller  
 Jesus Romero Serrano  
 Elisabeth Roscoe  
 Jeffrey Ross Clark  
 Kristie Rossi  
 Marcello Rotta  
 Nicolette Rounds  
 Dr. Lisa R. Roy  
 Steve Ruby  
 Jean Rueschhoff  
 Francine Ruybal  
 Donald Ryan  
 Erica Ryan  
 Michael Salop  
 Desiree Sanchez  
 Michele Sandoval  
 Sandra & Martin Goldhaber, a donor-  
 advised fund at Schwab Charitable  
 Laura Schaub  
 Sandra Scherer  
 Herbert Schillereff  
 Ray Schraeder  
 Len Schreiberstein  
 Suzanne Schreyer  
 Judith & Lawrence Schulman  
 Monica Schultz  
 Erin Schwartz  
 Brette & Russell Scott  
 Lynn & Tom Seaman  
 Bette & David Seeland  
 Ellen & Andy Selig  
 Jean Settles  
 Claudette & Oleg Sevcenco  
 Timothy Severance  
 Katherine Sheldon  
 Scott Shulda  
 Lynn & Rich Schults  
 Kimberlee Sia  
 Stan Siefer  
 Sean Silvers  
 David Singer  
 Nina & Tom Sisk  
 Amanda Skrzypchak  
 Judy & Gary Sliwinski  
 Nancy Small  
 Virginia Smetana  
 Anthony Smith  
 Herbert Smith  
 Tina Smith  
 Suzanne & Marshall Snider  
 Michele Sorensen  
 Lisa Soto  
 Phillip Sparkes  
 Janice & William Spearman  
 Astrid Spies & Sean Fontaine  
 Rebecca Sposato  
 Remy & Darren Spreeuw  
 Jim Staples  
 Roslyn & Jonathan Steeler  
 Tom Stevens  
 Helen & Lyle Stewart  
 Jenny Stith  
 Katie Stobbe  
 Julie Stremel  
 Carol Sulivan  
 Laura Lee Summers  
 Angie & Mark Swanson  
 Eileen & Gordon Swartzfager  
 Katie Tate  
 Laurie & John Tatlock  
 Katherine Taylor Beach  
 Kathleen Thompson  
 David Thomson  
 Beverly Thygesen  
 Katie Tiernan Johnson  
 TisBest Philanthropy Charity Gift Card Program  
 Hazuki Tochiwara  
 Deborah Tolley  
 Gabrielle Tonk  
 Kay & Thomas Toomey  
 Haleh Torbaghan  
 Meredith Trevino  
 Mary & Michael Tully  
 Margaret Ulrich-Nims  
 University of Colorado Boulder  
 Helen Van Anne  
 Wendy Vance  
 Kelli Varney  
 Brenda Vasquez  
 Nicole Veltze  
 Jill Viehweg & Charles Musiba  
 Jamie Villarreal-Bassett  
 The Visser Family  
 Stephen Vogler  
 Sarah Volkert  
 Alyssa Vonlehman  
 Angie Vossler  
 Peter Wall  
 Nancy Walsh & Ted Vidal  
 John Wasserman  
 Kristin & Bill Waters  
 Norma Watts  
 Michael Wear  
 Riley Webb  
 Emma Webster  
 Miriam Weil  
 Wendy & Richard Weiskopf  
 Bridgette Weiss  
 Catherine Welch  
 Ceci Wells  
 Milly Westphalen & Suzanne Schreyer  
 Ann Whalen  
 Roberta Wheller  
 Suzanne & Lee White  
 Peter Whitmore  
 Brian Whitworth  
 Katie & Dan Wienecke  
 Katie Wilkins  
 Emily Williamson  
 Joy Wilson  
 Leigh & Michael Wilson  
 Stefanie Winfield  
 Margaret Wing  
 Chrissy Winkler  
 Scott Wolf  
 Alison Wright  
 Steven Wright  
 Judy Yaw  
 Brad Yohe  
 Lisa Young  
 Anita Youngblut & Richard Scholz  
 Denise & John Youngquist  
 Lisa & Robert Yurglich  
 Rick Zabel  
 Rebecca Zachmeier  
 Whitney Zanotelli  
 Melissa Zaragoza  
 Edith Zemanick  
 Steve Zickerfoose